

JTL Remote Learning News
Issue 13 (24.07.20)

[View this email in your browser](#)



Dear <<First Name>>>,

Welcome to issue 13 of **JTL Remote Learning News**, our very last newsletter! In this issue we have provided a summary of all the links to videos, resources and guides that we have included in previous newsletters to help you.

Our regular section on Functional Skills is also included to help you if you still need to develop or practise your maths and English skills.

We will be including all future learner updates on the [JTL learner web page](#) so please make sure you check this out regularly to keep up-to-date with news and resources to support you with your apprenticeship studies.

Remember, if there's anything in particular you need help with over the summer, please contact your Training Officer in the first instance, otherwise you can get in touch with us at info@jtltraining.com

Latest updates

Link to previous newsletters

We have made all 13 issues of JTL Remote Learning News available online so you can take a look through them to see if there's anything you've missed.

[Previous issues of JTL Remote Learning News](#)

Useful guides and links

Links to a range of useful resources and guides are listed below to help you with your apprenticeship studies.

Logging 20% OTJ evidence using Smart Assessor

Take our short 20% off the job quiz to check your knowledge:

[20% off the job quiz](#)

Watch our video on how to access resources on Smart Assessor:

[Accessing resources on Smart Assessor video](#)

Read this guidance on alternative ways to access the [internet using web browsers and consoles](#):

[Alternative ways to access the internet](#)

Check out our guide featuring remote learning tips for learners:

[Guide on remote learning tips for learners](#)

Please read out 'Learner Behaviour Policy' so you know what behaviour is expected of you by your tutors during online sessions:

[Learner Behaviour Policy](#)

Watch this short safety video released by the ECA, NICEIC and ELECSA for householders, electrical and other engineering contractors as you return to work:

[ECA, NICEIC & ELECSA safety video](#)

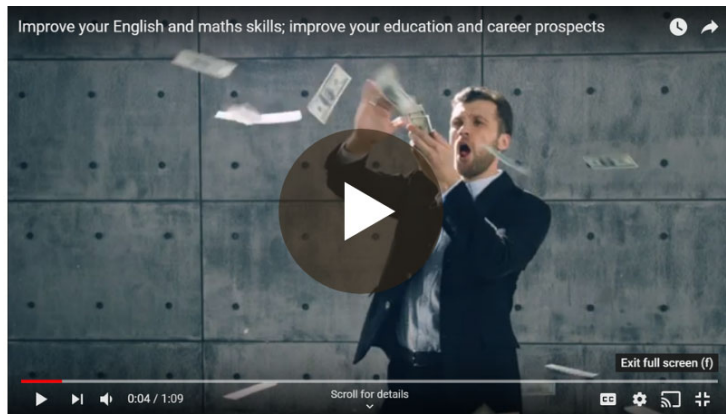
Watch this video on accessing and completing a review form in Smart Assessor:

[Completing a review form in Smart Assessor](#)

Practising maths and English skills

Please make good use of all the useful resources below, to help you practise your maths

Watch this video for an overview of bksb system:



To access the bksb system to practise your skills please click on the button below:

[Practise your maths and English skills](#)

Read our handy guide below on how to complete your learning on the bksb system:

A screenshot of the JTL Training People website. The header features the text "Remote Learning for Maths and English" and a sub-header: "The bksb online teaching and learning resource will allow you to continue to practice and improve your maths and English skills. You can access the system from a desktop, tablet or a mobile phone." The JTL logo is on the right. Below the header, there is a login form with fields for "Username" and "Password", a "Remember me" checkbox, and a "Forgot your details?" link. A "LOGIN" button is at the bottom right of the form. To the left of the form, there is contact information: "To access JTL's bksb site, click on the link below: <https://jtltraining.bksblive2.co.uk>" and "If you have forgotten your log in details, click on 'forgotten details?', enter your email address and you will be emailed your log in details." Below this, it says "For any other issues with your bksb account, please email ExternalSupportTeam@jtltraining.com or call 0800 085 2308". At the bottom, it says "Online learning powered by bksb".

If you have any issues with your bksb account, please email ExternalSupportTeam@jtltraining.com or call **0800 085 2308**.

Functional Skills Sample Assessment

To access the Functional Skills sample assessment click on the pink button below;

[Functional Skills Sample Assessment](#)

Please take a look at the guide below on how to work through the Functional Skills sample assessments:

Working through the sample tests, will better prepare you for your Functional Skills test. Any questions please contact your Training Officer or Functional Skills Trainer.



Essential Skills Wales sample assessments

If you are a learner in Wales, continue to work through the WEST system. For further guidance on this, please contact your Training Officer. You can also view Essential Skills Wales sample assessments by clicking on the orange button below:

[Essential Skills Wales sample assessments](#)

If you have any concerns or further questions about Functional Skills, please contact your Training Officer.

Let us know if you need additional support

If you have an additional learning need and feel that you need further support with your learning, please email learnersupport@jtltraining.com or speak to your Training Officer.

Where to access future learner updates

As we will no longer be sending you newsletters, please make sure you regularly visit the JTL learner web pages (see link below) where we will be posting all future learner updates.

[Check out the latest learner updates here!](#)

So, that's all from us! We hope you have found these newsletters useful. Remember to visit the [JTL website](#) to access previous issues of this newsletter and find all future learner updates.

In the meantime, if you have any general questions or concerns about your learning please contact your Training Officer or call JTL's customer services team on **0800 085 2308**. You can also email info@jtltraining.com

With best wishes,
From the JTL Team



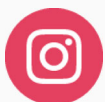
Facebook



Twitter



LinkedIn



Instagram



YouTube



Website



Email

Copyright © JTL 2020, All rights reserved.